

Installation Instructions

UES End Seal Kit

For Self-Regulating & Constant Wattage Heating Cables



PJ496-8
161-562581-028
July, 2021

UES End Seal Kit

Self-Regulating & Constant Wattage Heating Cable Installation Instructions



Item	Qty	Description
1	1	Pipe Standoff
2	1	Black Self-Regulating Cable Grommet
3	1	Orange Constant Wattage Grommet
4	1	End Cap

General

The UES End Seal kit is used for electrical termination of self-regulating and constant wattage cables. Each kit contains the terminations needed to make all electrical connections.



Ex CE 2903 IIG Ex e IIC T* Gb Ta -60°C to 195°C

IECEX ITS 07.0018X

Ex e IIC T* Gb Ta -60°C to 195°C

*For T -Ratings, see heating cable

Certifications & Approvals

Type 4X -60°C < Ta < +55°C

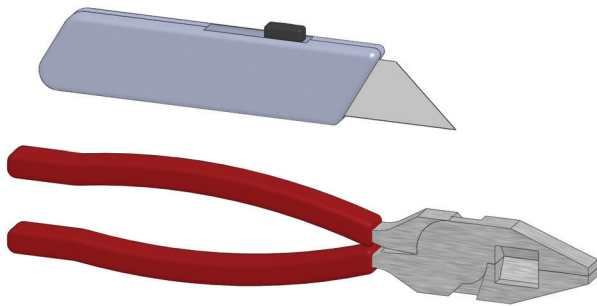
Ordinary & Hazardous Locations

Class I, Division 2 Groups A*, B, C & D

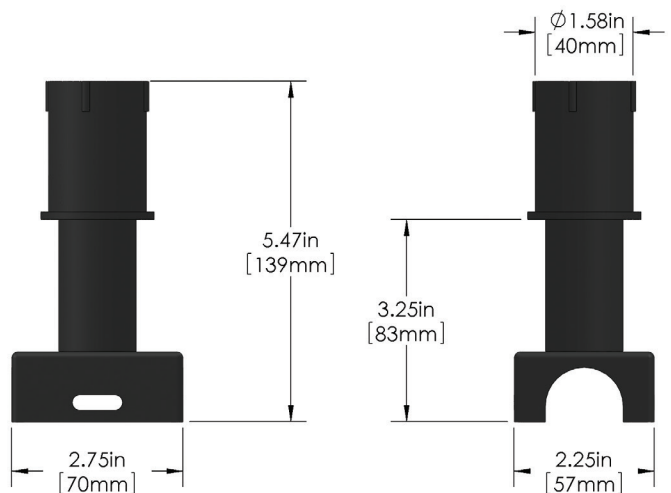
Class II, Division 2 Groups F & G

*CSA only

Tools Required for Kit Installation



Actual Kit Dimensions



⚠ WARNING

HAZARD OF ELECTRIC SHOCK. Disconnect all power before opening. All installations must be effectively grounded in accordance with the National Electrical Code to eliminate shock hazard. To avoid electrostatic discharge. Wipe with damp cloth.

⚠ WARNING

Turn off power before removing junction box cover at all times.

Order Separately

Pipe Straps

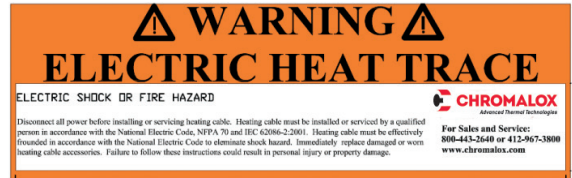
- PS - 1 (382352) - 1/2" to 3/4" pipes
- PS - 3 (382360) - 1" to 3-1/2" pipes
- PS - 10 (382379) - 2-1/2" to 9" pipes



⚠ WARNING

Users should install adequate controls and safety devices with their electric heating equipment. Where the consequences of failure may be severe, back-up controls are essential. Although the safety of the installation is responsibility of the user, Chromalox will be glad to assist in making equipment recommendations.

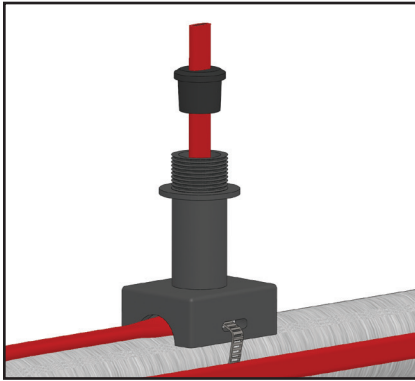
Caution Label CL-1 (382424)



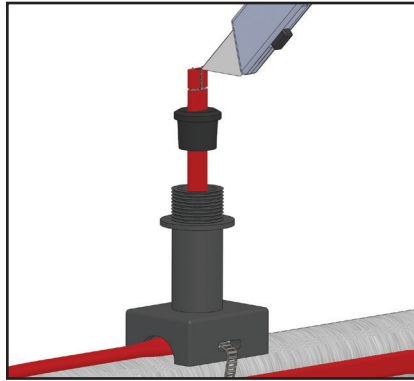
Fiberglass Tape FT-3 (389941)



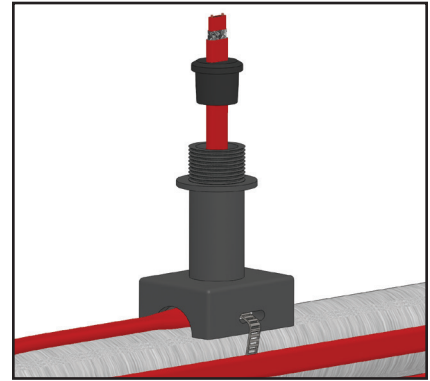
Cable installation instructions: SRL, SRF, SRM/E, SRP, SRH600 CWM cable special instructions denoted by *



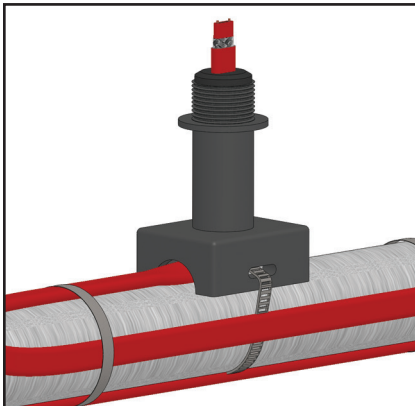
1. Insert cable without the braid through pipe standoff and grommet as shown. Attach pipe standoff to pipe with pipe straps (Chromalox model PS not included). Leave braid outside of pipe standoff at grommet. For pipes smaller than 1 1/2" diameter a small pipe adapter (Chromalox model SPA not included) is required.



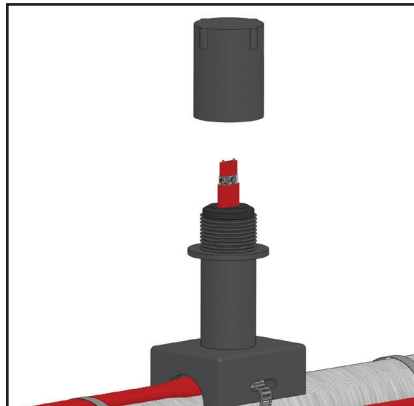
2. Score the outer insulation 1/2 inches from the end of cable. Lightly cut the outer jacket up the center to end of heating cable and remove the jacket from the cable.



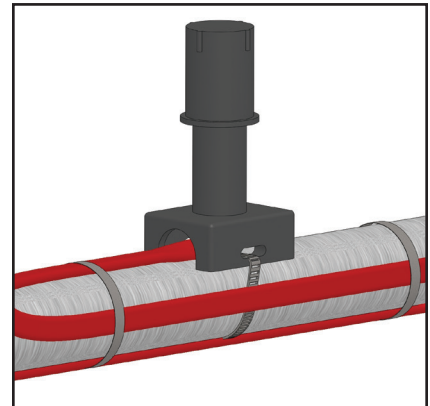
3. Using wire cutters trim exposed grounding braid away from the end of the cable.



4. Adjust cable leaving 1" past the end of the grommet and insert the grommet into the pipe standoff. Attach extra cable to pipe as shown.



5. Slide end cap over cable. Grommet should be placed inside pipe standoff.



6. Tighten end cap until it bottoms out on pipe standoff.

Limited Warranty:

Please refer to the Chromalox limited warranty applicable to this product at <http://www.chromalox.com/customer-service/policies/termsofsale.aspx>.

Chromalox, Inc.
1347 Heil Quaker Boulevard
Lavergne, TN 37086
(615) 793-3900
www.chromalox.com