



# PRODUCT DATASHEET SYSTEMS ACCESSORIES

## WARMTRACE™ HSX®

### TRACEPLUS™ NONMETALLIC KITS

The following accessories were developed specifically for WarmTrace hot water temperature maintenance systems and are intended for use with HSX® 2100 self-regulating heat trace.



**PCA-COM** circuit fabrication kit is designed to fabricate an HSX 2100 circuit with one power connection boot and one end cap. Up to three HSX heat tracers can enter a junction box supported by a PCA-COM kit when additional connection boots (TBX-3L) and end caps (ET-6) are used.

The PCA-COM kit components include:

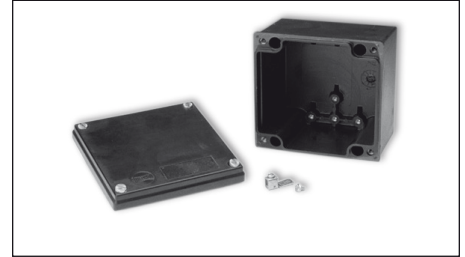
- Pipe-mounted junction box support (junction box provided by others)
- Heat trace grommet
- Power connection boot (TBX-3L)
- End caps (one ET-6 for HSX)
- RTV adhesive
- Ground wire extension lead with lug
- Wire fasteners
- Installation instructions



**PCS-COM** re-enterable in-line or T-splice kit is designed to fabricate outside the insulation splices of HSX 2100. Each splice kit includes three heat trace connection boots and the end cap needed to complete a T-splice.

The PCS-COM kit components include:

- Pipe-mounted expediter with splice cover
- Heat trace grommet
- 3 heat trace connection boots (TBX-3L)
- End caps (two ET-6 for HSX)
- RTV adhesive
- Wire fasteners
- Grounding splice lug
- Installation instructions



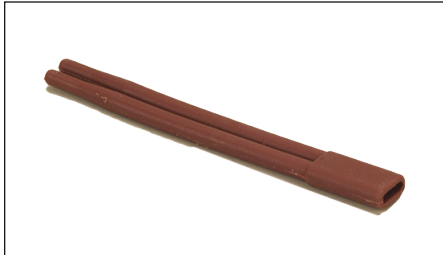
**JB-K** nonmetallic junction box is intended for use with the PCA-COM kit. The corrosion-resistant NEMA 4X unit includes a removable gasketed cover and ground lug.

### CABLE END TERMINATIONS, ATTACHMENT TAPE AND CAUTION LABELS



**ET-6C** end termination kits are designed to properly terminate the end of an HSX 2100 heating circuit (away from power).

PCA-COM and PCS-COM kits include end caps, RTV adhesive, caution label and termination instructions.



**TBX-3L** power connection boot is used to prepare additional heat trace for connection to power through a PCA-COM kit. One TBX-3L boot is provided with each PCA-COM kit. Three TBX-3L boots are provided with each PCS-COM kit.



**FT-1L** fixing tape is used for attaching the heat trace to piping every 30 cm (12") or as required by code or specification. FT-1L may also be used for attaching pipe mounted expeditors in circuit fabrication and splice kits. Tape is 13 mm (1/2") wide x 33 m (108') long.

Max. Exposure Temp ..... 93°C (200°F)

Min. Installation Temp ..... 5°C (40°F)



**CL** caution labels (vinyl-based peel and stick) should be installed on the thermal insulation weather barrier. In accordance with the NEC, electrically heated pipelines and vessels are to be clearly identified "at frequent intervals along the pipeline or vessel." Caution labels should be placed at 3-6 m (10'-20') intervals or as required by code or specification.

### CERTIFICATIONS/APPROVALS



Approvals apply when used with Thermon electric heat tracing.